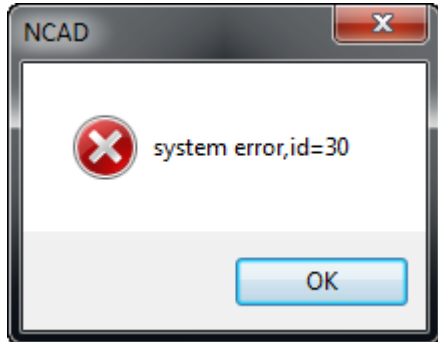


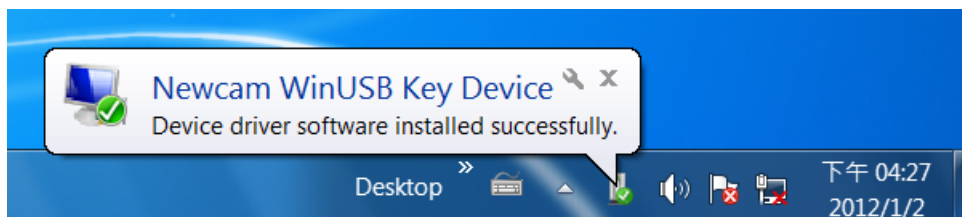
Newage Technology System Software And USB Assist Processor Installation Instruction

❖**Note:** Please install the setup program before insert the usb assist processor into computer, otherwise the software will send out a warning below.



Step of installation:

1. First install setup program of software on disk. Ex SETUP.EXE.
2. Then usb assist processor insert into computer after installing setup program.
3. When insert usb assist processor, then system will automatically install driver of usb below. The same time can use the software of Newage.



❖If user install the software before insert the usb assist processor, then system will send out warning. Please read follow-up of measure of trouble shooting.

❖On install software or update driver software, if install system files that *.SYS copy to subdirectory on windows and the percentage of installation is stop for long time. In this situation , user maybe consider that computer is crash. This situation is owing to anti-software (most of Kaspersky) to resist copying system files to system subdirectory. Has two measures of trouble shooting :

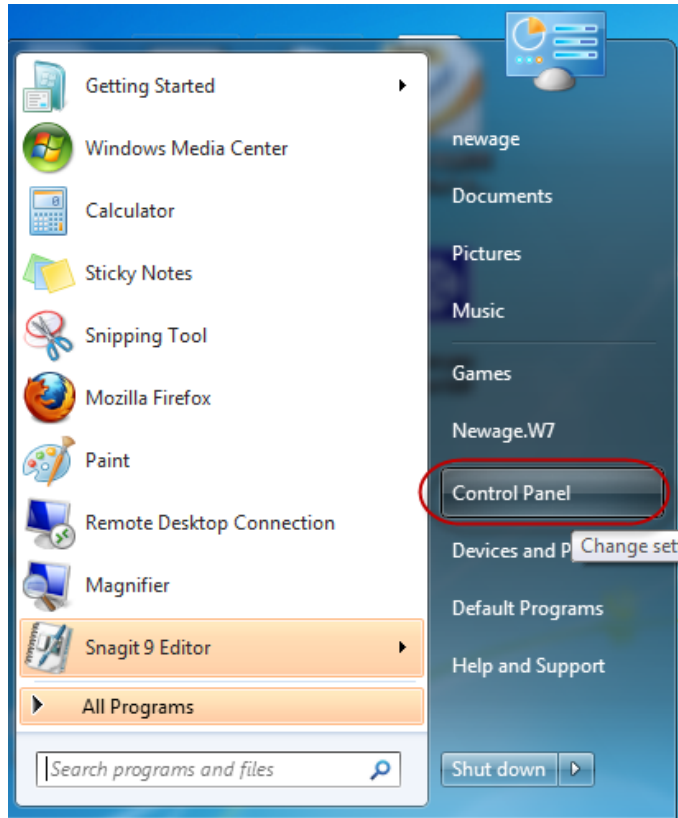
1. Close the anti-software and restart installing or updating driver software.
2. Restart computer and press “F8” into safe mode, then restart install software or update driver software.

Measure of USB trouble shooting, separate into of four parts :

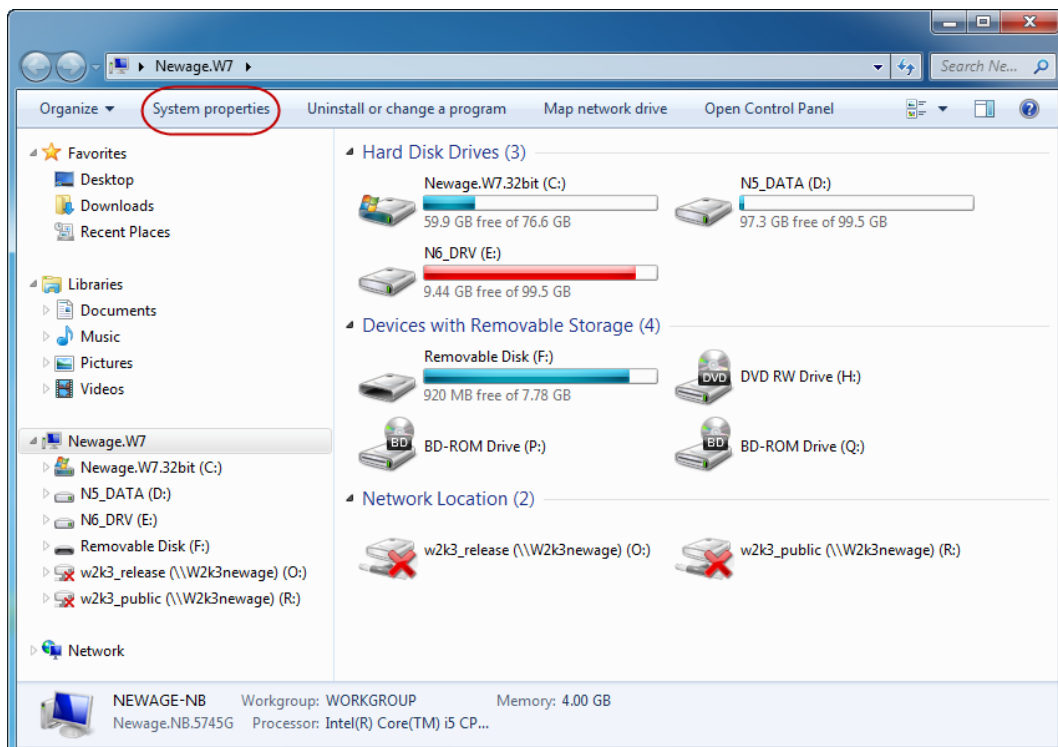
- A 、 Instruction of open Device Manager.
- B 、 Update driver of usb assist processor.
- C 、 How to make sure driver of usb assist processor is regular.
- D 、 How to solve unable install driver of printing support.

A、Instruction of open Device Manager:

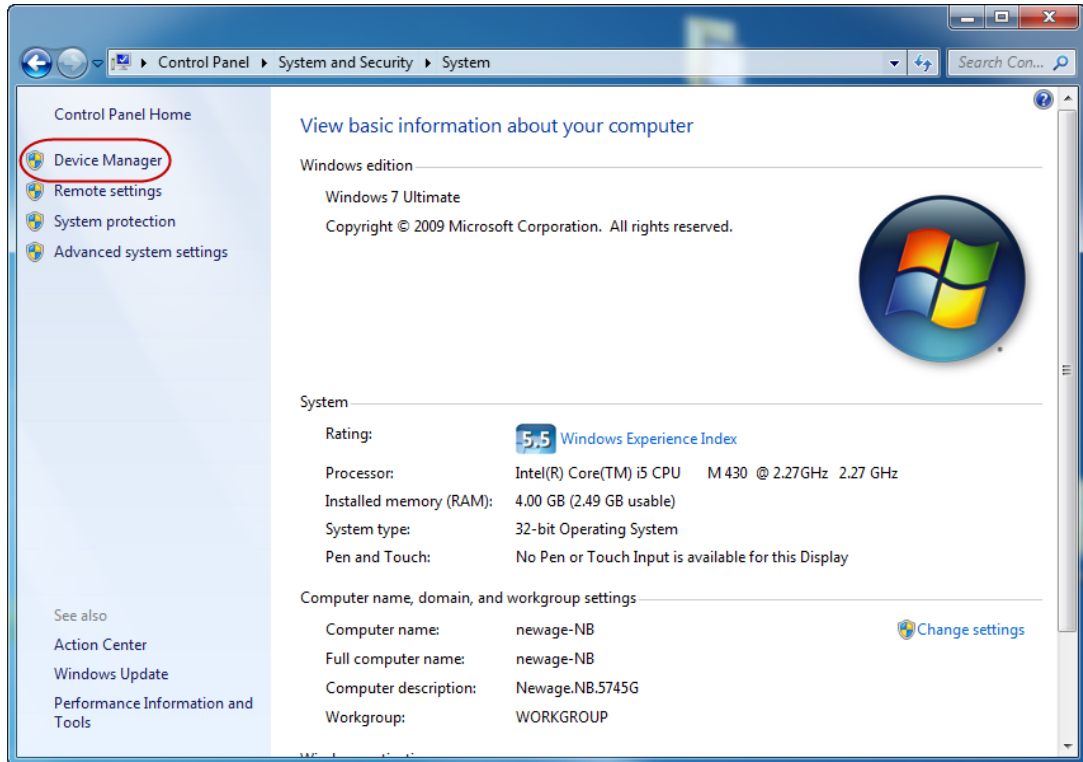
1. Open dialog of System Properties:
 - Select [Start]→[Control Panel] below



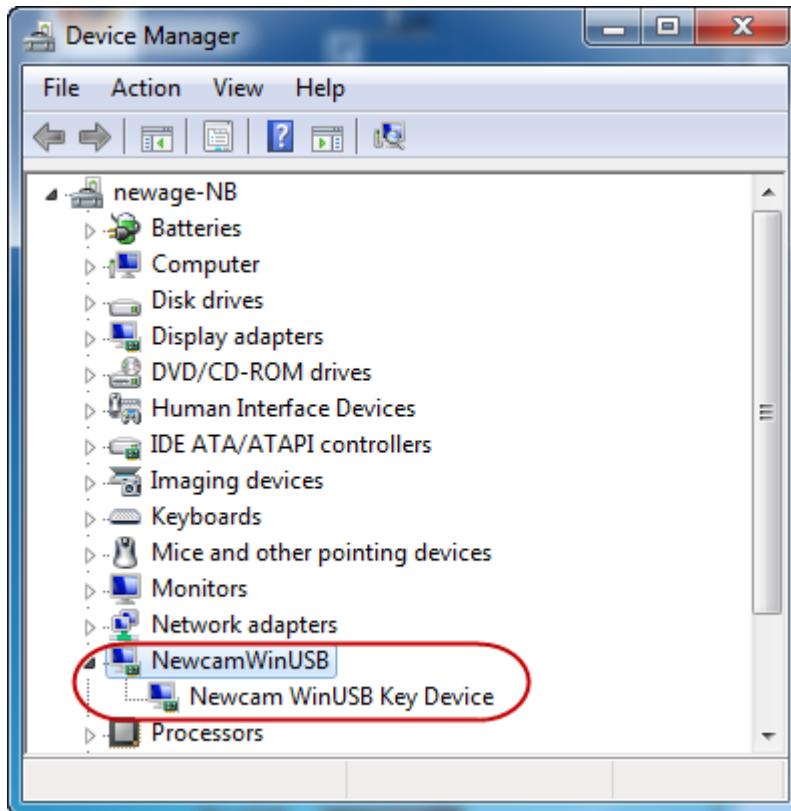
2. Select [System properties] on left-up part.



3. Enter [System properties] and select [Device Manager] on left part.

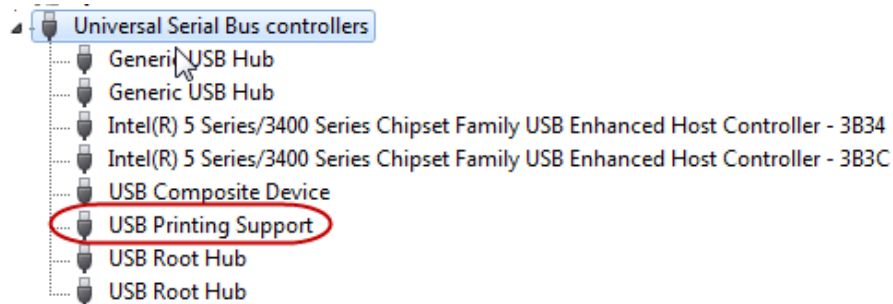


4. Enter [Device Manager] below.



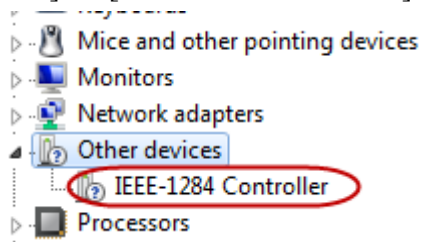
B、Update driver of usb assist processor

1. If system had installed driver of usb assist processor, then system send out warning or Windows recognize wrong driver. Please update USBKEY manual.
Step of installation below:
2. Open [Computer]→[System properties]→[Device Manager] and seek the driver of wrong installation.
[Universal Serial Bus controllers]→[USB Printing Device]



OR

[Others] → [IEEE-1284 Controller]

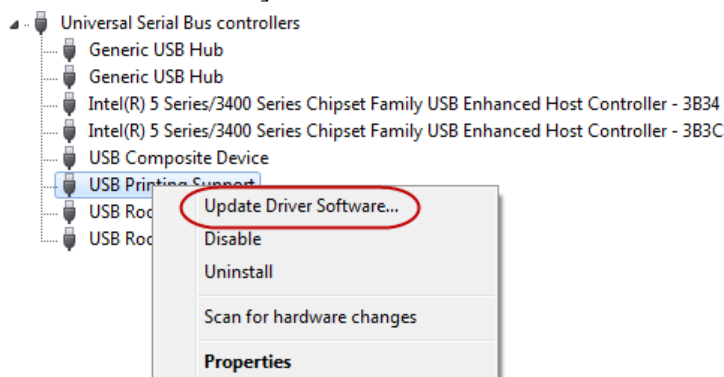


(If user can't seek out IEEE-1284 Controller or USB Printing Device. Please show the device each entry, promote usb key and count device before and after. Then the spare device is NEWCAM USBKEY.)

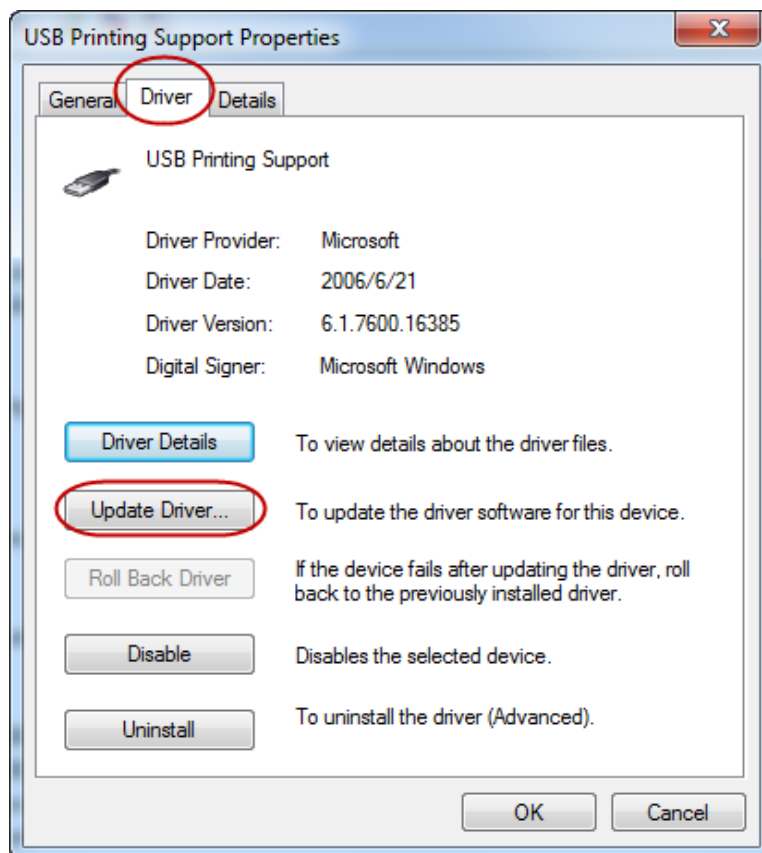
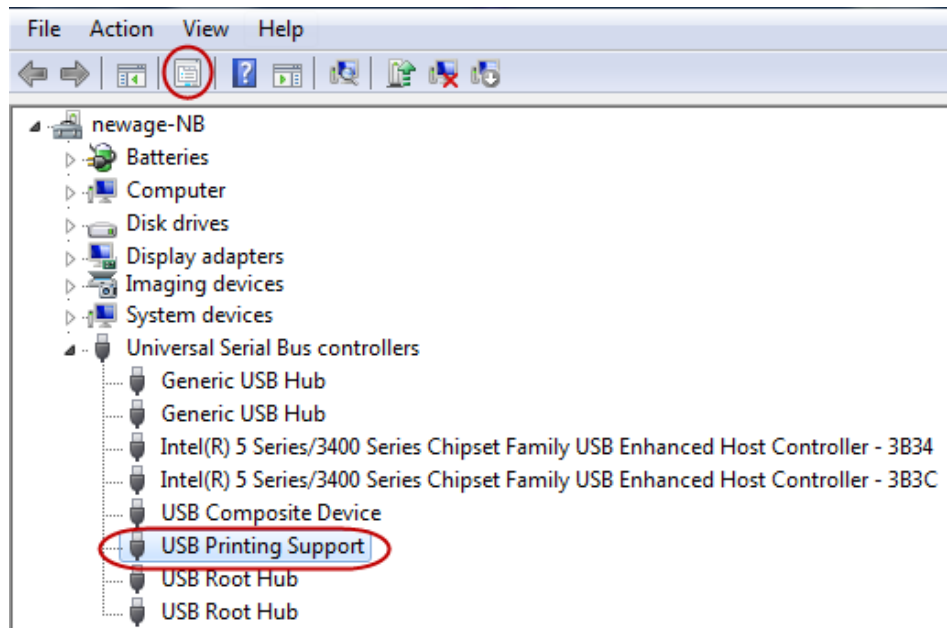
※ Use [USB printing support] to instruct.

Call out [Update Driver Software...] has two method:

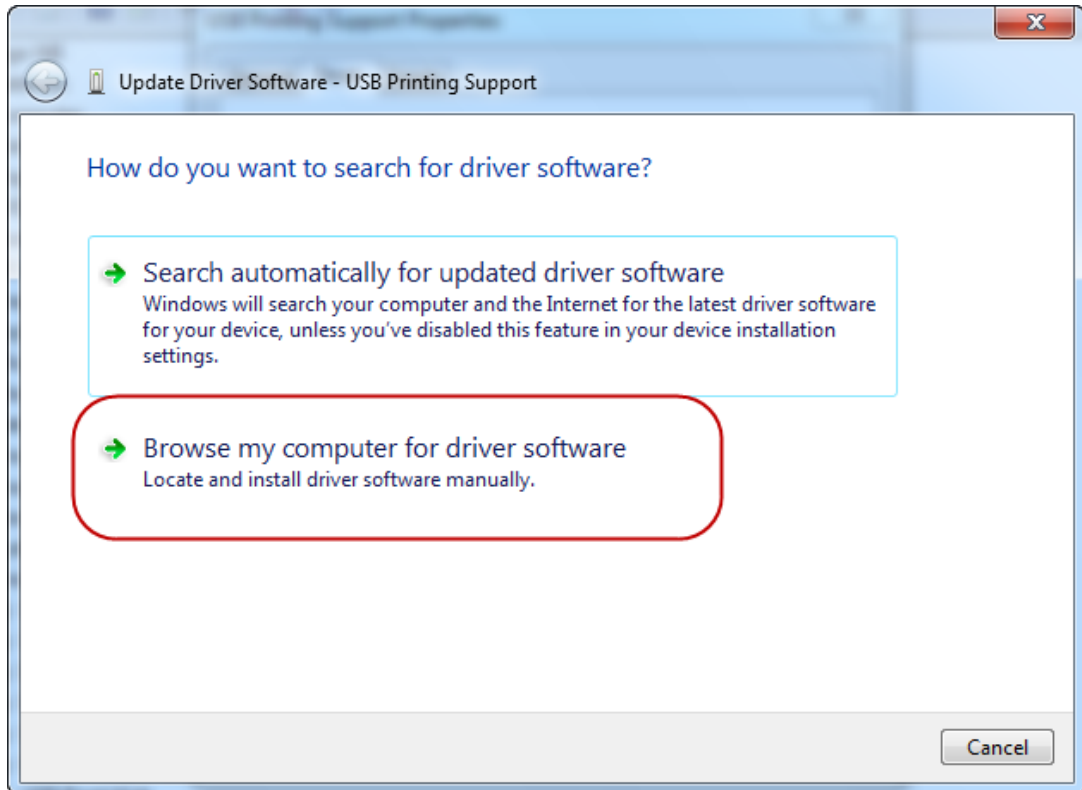
(1) Use right bottom of mouse to select [USB printing support] and select [Update Driver Software...].



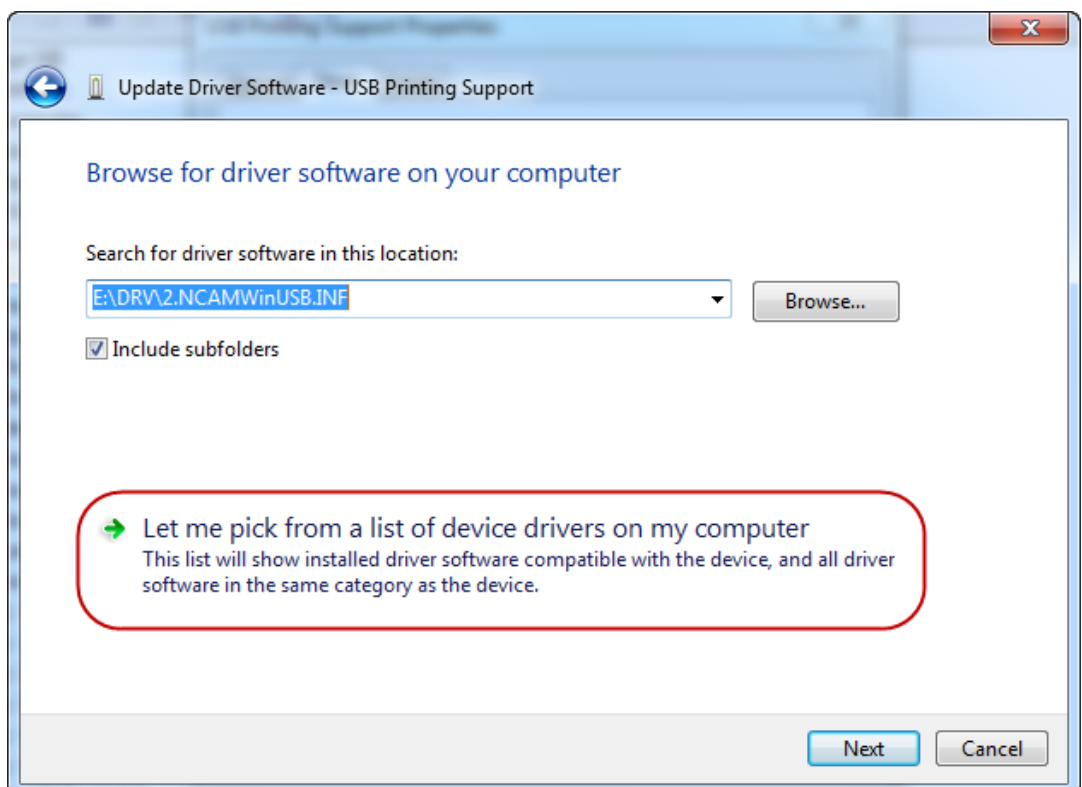
(2) Use left bottom of mouse to select [USB printing support] and click [Properties] under toolbar. System will send out dialog of [USB printing support] and click [Update Driver...] on page 2(Driver).



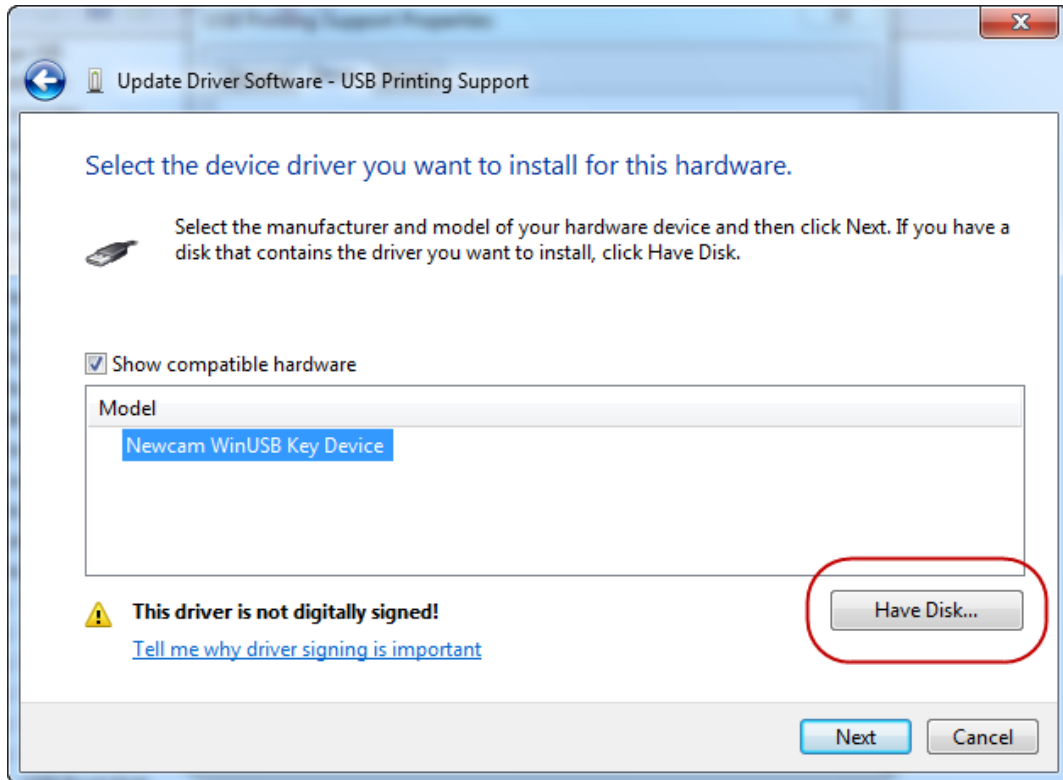
3. System will call out dialog of [Update Driver Software-IEEE-1284 Controller], and click [Browse my computer for driver software].



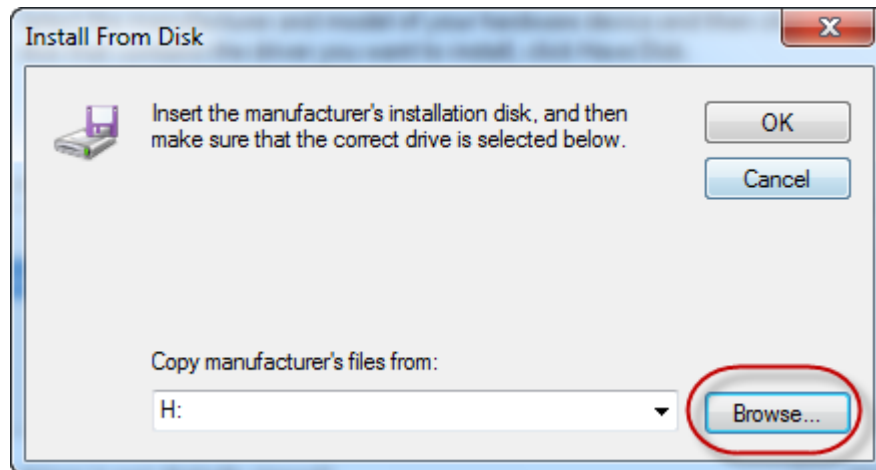
4. Click [Let me pick from a list of device drivers on my computer] on the dialog of [Browse for driver software on your computer].

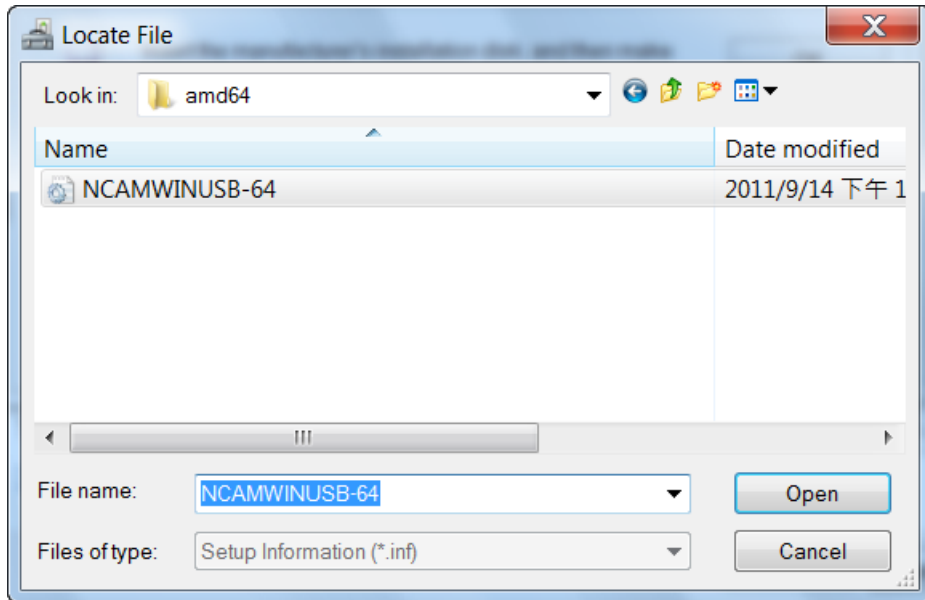


5. Click [Have Disk...] on [Select the device driver you want to install for this hardware].

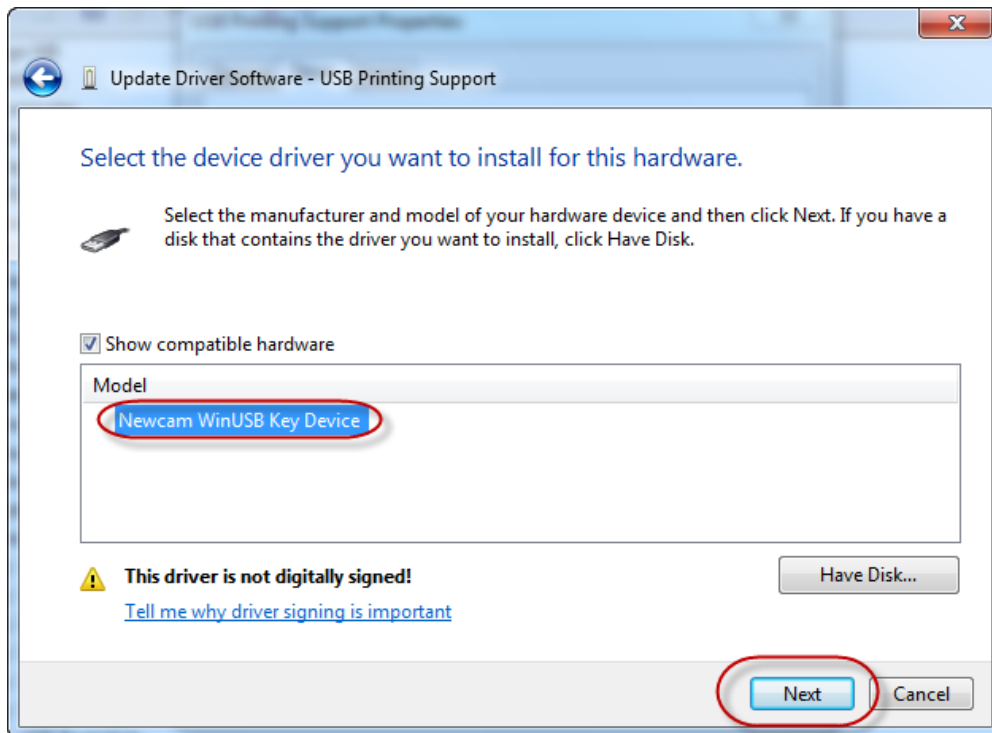


6. In dialog of [Have disk...], click [Brows...] and select driver of [Ncam WinUsb.INF], then click [Open] on disk of Newcam software.

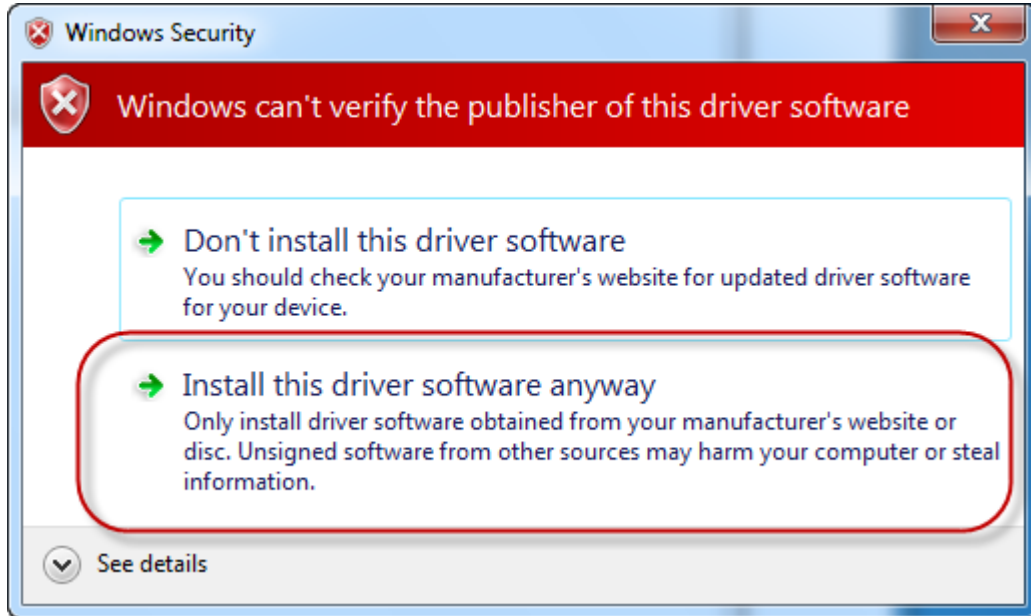




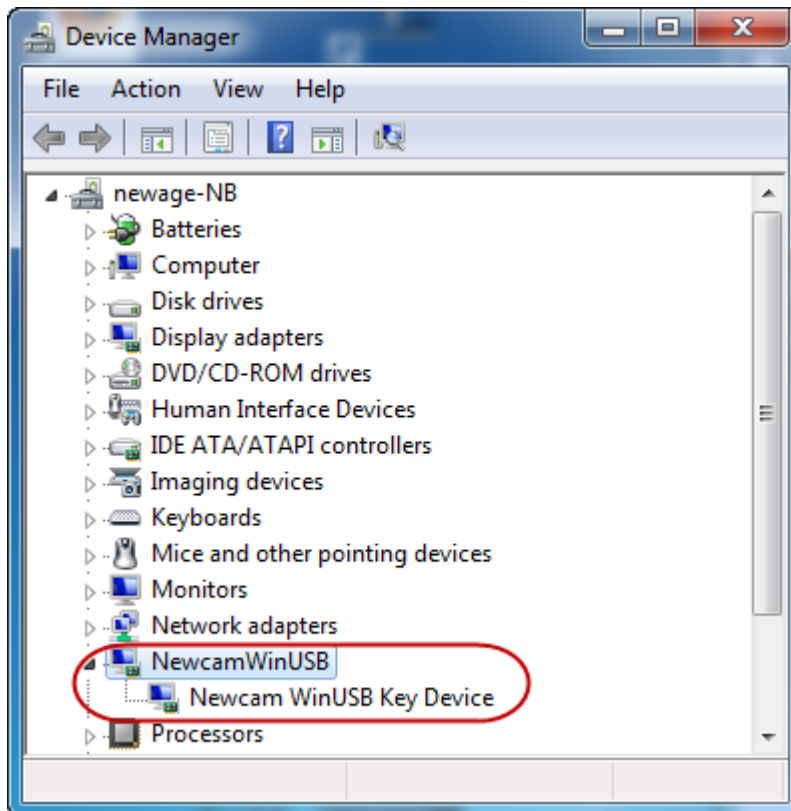
7. Get back to [Select the device friver you want to install for this hardware]. Then choose [Newcam WinUSB Key Device] on model and click [Next].



8. Then system will call out a dialog of [Windows Security]. Choose [Install this driver software anyway] and wait for installation.

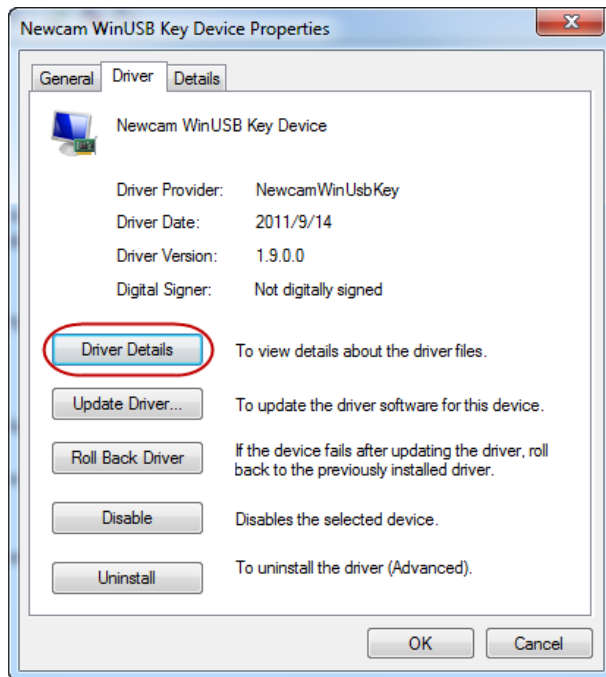


9. After installation, open [Device Manager] then can see update that will done.

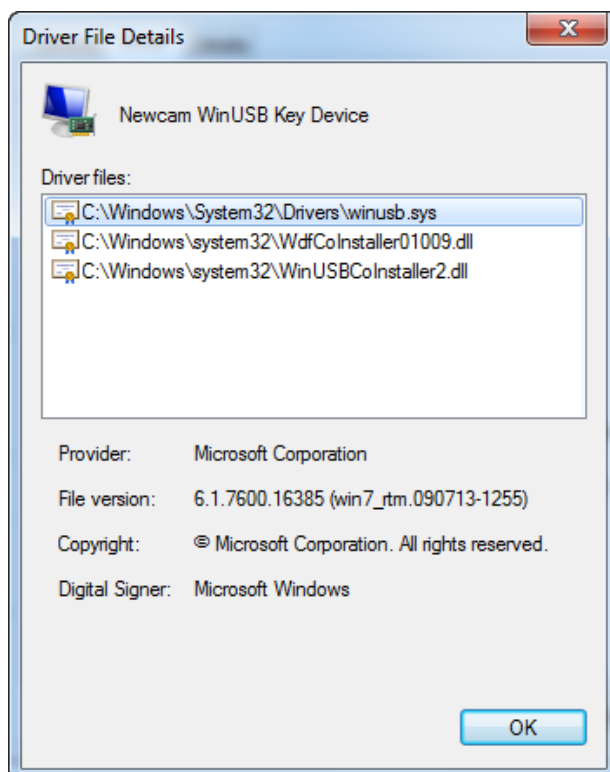


C 、 How to make sure driver of usb assist processo is regular

After installing driver of usb, but unable to use software. Please enter [Device Manager] and use right bottom of mouse to click [Newcam WinUSB Key Device], and use left bottom of mouse to click [Properties]. Click [Device] and click [Driver Details].



Enter [Driver File Details], have to show three driver file that is [winusb.sys], [WdfCoInstaller01009.dll] and [WinUSBCoInstaller2.dll]. If discover that have less any file, please restart install driver of [Newcam WinUSB].



D、How to solve unable install driver of printing support :

※After installation, if user discover that printer were irregular install, please follow two method above :

1. Open subdirectory of NEWCAM and search [ResetNUSB.exe] file, use right bottom of mouse to select [Run as administrator], then input usb of printer again.
2. Open [Computer]→Enter C:\WINDOWS\inf Search [Usbprint.iii] file and renamed to [Usbprint.inf]. Finally, input usb of printer again, that's will be done.